

### Colors and finishes

AL 33 profile can be painted according to the RAL palette in the color of your choice.

## PROJECTS



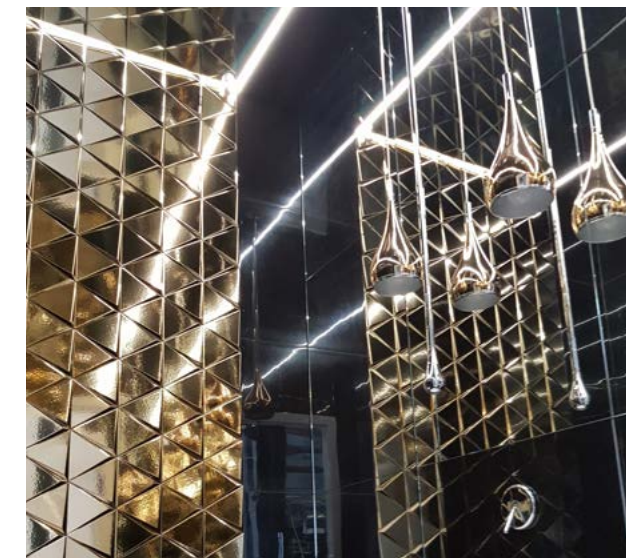
## AL 33 Twist

Used with MINI harpoon

Functional profile for creating tailor made design lamps with flexible LED diffuser. Thanks to its small size and the ability to bend, AL 33 profile allows to create light and stylish lamps and implement creative design solutions. Used with Mini harpoon.

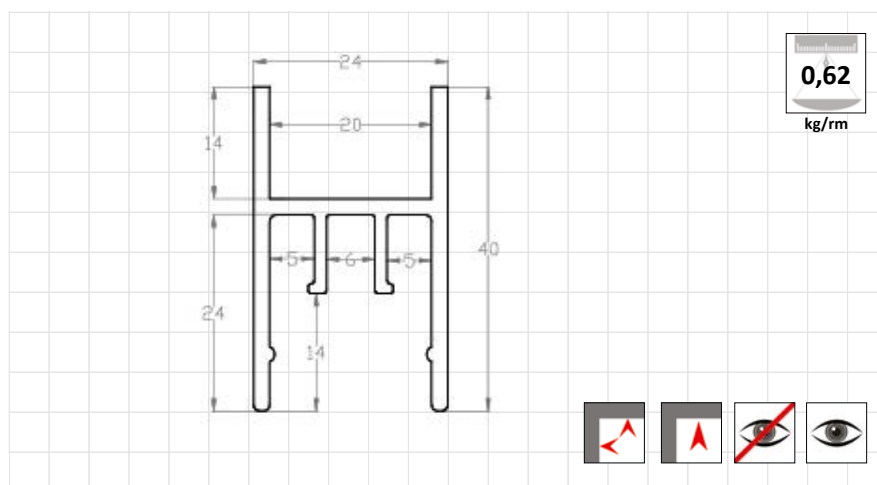
### ADVANTAGES

- Design elements created with this profile can be installed or mounted in different ways:
  - directly to the ceiling or a wall
  - suspended by metal cables from the ceiling
  - supported by Vecta Support System
- The profile can be combined both with tension material and independently, creating thin lines of light.
- LED lighting elements can also be easily installed on the both sides of the profile.



## DIMENSIONS

used with MINI harpoon



## DESCRIPTION

AL 33 profile was developed to enable the creation of lighting solutions with continuous light lines with the 20 mm wide flexible LED diffuser. LED lighting elements can also be easily installed on the both sides of the profile to make modular lights with glowing edges in two directions. Used with special fastenings the profile can be attached or hung directly to the ceiling. Also it can be attached directly to the wall. Profile can be used with stretch ceiling material. Minimum diameter for bended profile is 1600 mm. And maximum size of the finished rounded shape - 2400 mm diameter.

## ABILITY TO BEND PROFILE

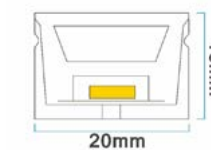
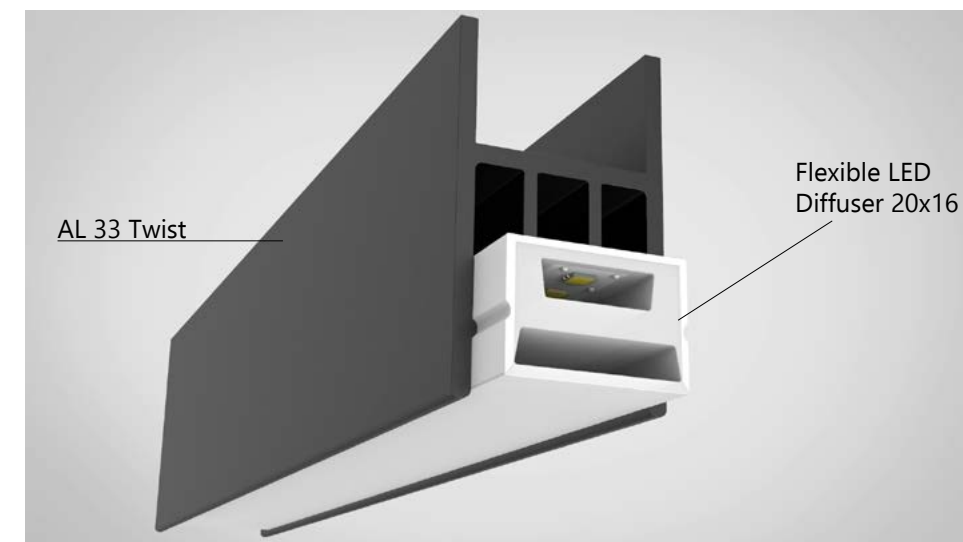


**Minimum diameter  
for bending AL 33 - 1600 mm**

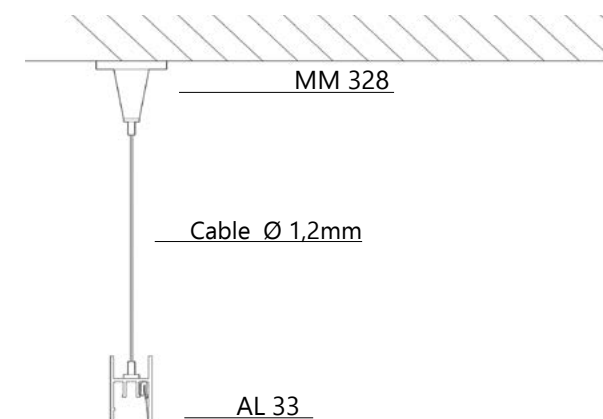
**Maximum diameter of the finished rounded shape -  
2400 mm**



## LIGHTING OPTIONS



## INSTALLATION TO THE BASE CEILING



**Cable mounting**



**Vecta Support System**



**CAP 33** is used when creating an independent light line. Its purpose is to cover the edge gaps on both sides of the profile and to limit the light halo at the edges.

CAP 33 has special wings for attaching to the main ceiling.