

CREATING A LIGHTING LINE IN ANY PLACE



Ceiling installation possibility to create a light line in any part of the ceiling, the profile acts as a separator



Wall installation at any level from the ceiling



AL 42 A Crown Light

Enhanced functional lighting profile that can be mounted on both the ceiling and the walls to create a perfectly diffused contour line of perimeter lighting. This profile can also be used as a separator and can be combined with other Vecta basic profiles (AL 04 or AL 05) to create light lines in any part of the ceiling. The VEC 4 light diffuser distributes the light from the LED strips evenly and homogeneously.

ADVANTAGES

- AL 42 Crown Light is an improved and stronger version of AL 20
- It is versatile and can be installed anywhere in the ceiling or on the wall
- Is used with the VEC 4 diffuser
- Has a recessed spot for the LED strip, which makes the light more diffused and eliminates shadows
- Acts as a separator
- The light line can end anywhere on the plane

OBJECTS DONE WITH THIS PROFILE



Commercial Pan'e Dolci bakery

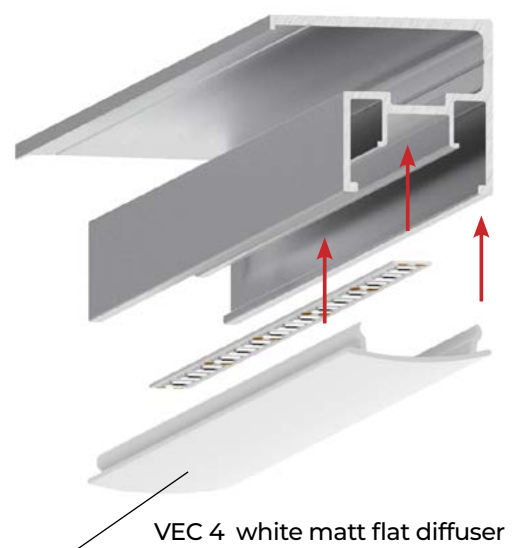
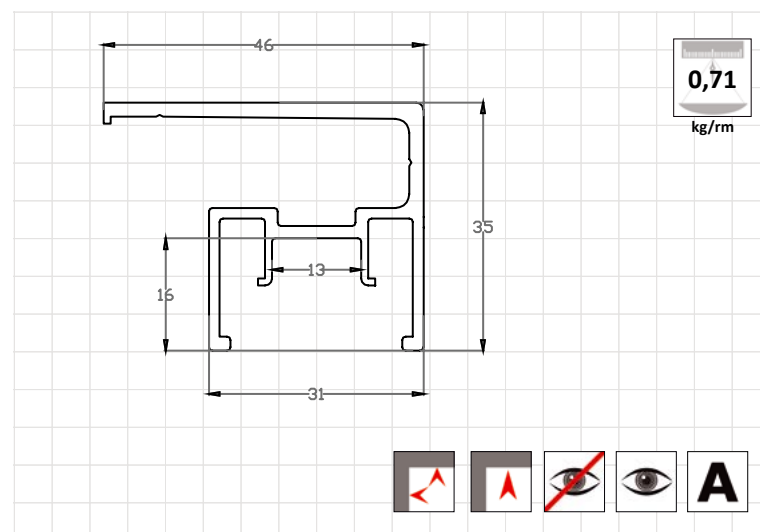
USA (Florida) / Miami
Installer: Khrome Concepts Inc.



Vecta Design office

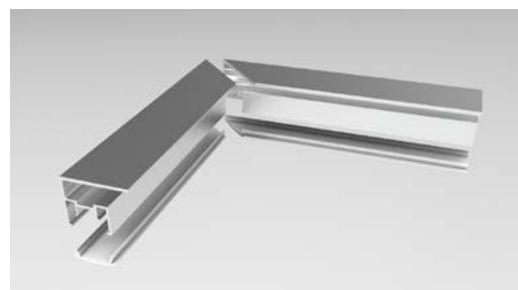
Estonia / Pärnu
Installer: Vecta Design

PROFILE REAL-SIZE DIMENSIONS



DESCRIPTION

AL 42 An aluminium profile CROWN LIGHT system can be fixed on the walls or on the ceilings for creating perfectly straight cornice lighting around the perimeter of the room or any other built-in design element. The most evenly scattered light will appear when using LED lights LR 57. For creating corners (for example, at an angle of 90 degrees), the profile needs to be cut at a precise angle of 45 degrees.



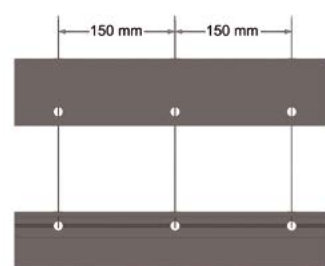
CAP ENDING

Ending **CAP 42** is used when creating an independent light line. Its purpose is to cover the edge gaps with stretch ceilings and to limit the light halo at the edges. CAP 42 has special wings for attaching to the main ceiling.

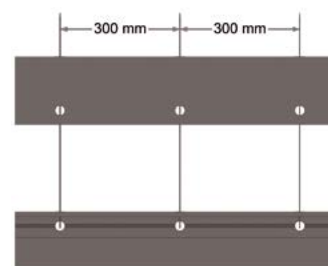


SCREW FIXING

Recommended screw fixing centres for the AL-42 profile are 300 mm for concrete surfaces and 150 mm for gypsum boards. Drill size 6 mm diameter.

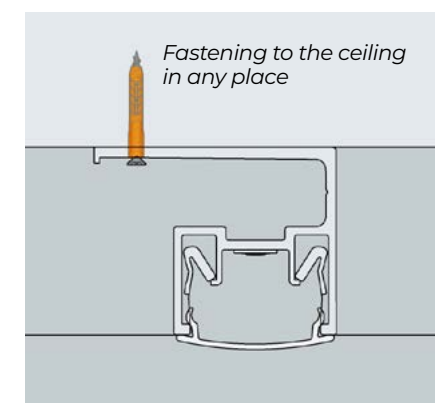
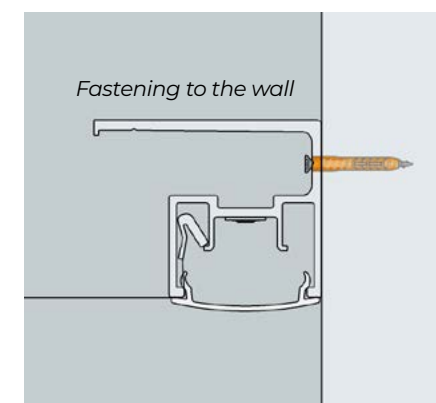
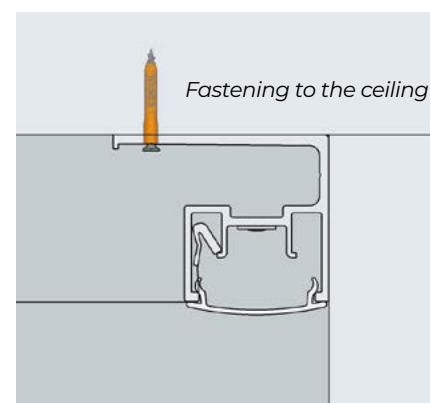


For gypsum surfaces



For concrete surfaces

VARIANTS OF INSTALLATION



PERIMETER LIGHTING LINE



Ceiling wall installation, light line around the perimeter of the ceiling, minimal height loss (35 mm) from the main ceiling